

[View this email in your browser](#)



Orphan Grain Train--Michigan News Relay

June 30, 2026

Shipment Departs June 9 for Riga, Latvia

Orphan Grain Train--Michigan's 18th International Shipment



On the afternoon before June 9 we received a call from New Jersey and a freight desk that our container order had been mis-dated and they were scrambling to see if another could be obtained. Through multiple communications another was found but ETA would be about 11:00 am instead of 10:00 as we planned. Our volunteer crew had already been informed, so a subsequent E-mail blast late that afternoon hopefully updated everyone. O.K.

So the following morning we receive another call again from New Jersey to inform me the trucker was able to get out early and ETA was now 10:00 again. Such are the exigencies which can happen, but this time we had the use of a high-low (forklift) which was great.

Kids hustled to help with some of our regulars who all pitched in. Anyway, the load finally pulled away after another successful job. This cargo has Riga, Latvia as its destination.

Romania Shipment Carrying Mercy Meals arrives Safely

Monday, June 15

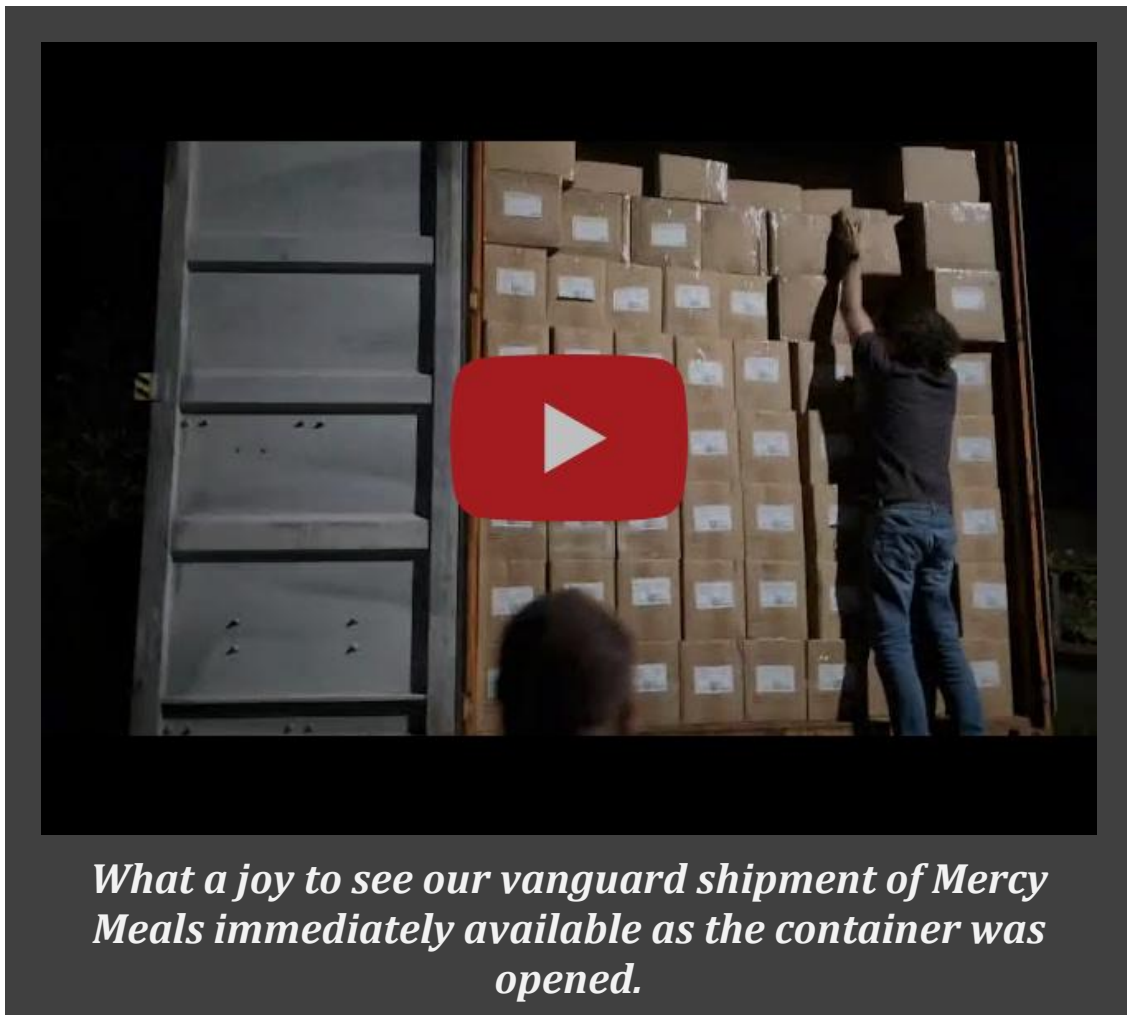
Dear friends,

We are happy to announce the shipment arrived safely last night. Thanks to your efforts the shipment arrived and our community will benefit from your packages. We thank you and may God bless you for your efforts.

Boghian Ghiorghita

Fundatia de Binefacere a Nevazatorilor din Romania

The Romanian Foundation for the Blind



What a joy to see our vanguard shipment of Mercy Meals immediately available as the container was opened.



**Michigan District LWML
Packs 10,000 Mercy Meals**



The picture here show only the final contingent of attendees and delegates at the Michigan District Lutheran Women's Missionary League Convention who volunteered for a servant event to pack Mercy Meals.

On June 26 packing lines were set to mix the rice, soy, vegetables, and nutrient packs for eventually send to those suffering food insecurity.

The great spirit and effort from these wonderful people adds momentum to the newly established Mercy Meals initiative in our Orphan Grain Train branch.



Holy Cross, Flushing Delivers Mats Planned for Thermal Backing



Though we have received thermal mats before, the word "plarning" was new to us. Plarning is the craft of transforming discarded plastic bags into sturdy, reusable "plastic yarn" then used to knit waterproof items like these sleeping mats.

Karen Acha (foreground) and DCE **Denys Zucher** delivered to Orphan Grain Train a large quantity of mats made by members of Holy Cross, Flushing and others in the community. The group is soon obtaining a weaving loom to continue efforts so far done by hand. We appreciate the loving efforts.

Lyle and Marlene



Meet two of our loyal support team. **Lyle and Marlene Brewster** repeatedly drive from Saginaw with goods gathered from around the churches. They almost always then stay to help at the OGT center sorting clothing and adding to the enjoyable friendship and conversation. We can't thank them enough.

Trinity, Pinckney



Checks may be sent directly to: Orphan Grain Train--Michigan
126 E. Main St., Sebawaing, MI 48759

[Contact Us](#)

