



Delivering Hope

Boots on the ground and food on the way.

Mid-Atlantic Branch donated \$6,000 toward Jamaica's need following the devastation of Hurricane Melissa this past Fall. Grant Schmidt VP, linked with Pat Fletcher of *Operation Save Jamaica* to observe the needs first hand, on the western part of the island. Our cargo of rice and bean meals and tarps followed by jet. We continue to pray for the resilient people of Jamaica as they face the struggles of limited water, fuel and food. OGT support continues. ■



A Banner Year: 5 Shipments

Shipments are determined by specific requests from our international and domestic destination partners.

We have had another exciting year with 5 shipments: March 1 to **Ukraine**, April 30 to **Latvia**, October 23 to **Georgia**, October 29 to **Latvia**, and November 11 to **Kentucky, USA**.

The **Ukrainians** are so thankful for being able to keep the container. Information on that shipment was reported in the last Newsletter. In the first shipment to **Latvia**, volunteers loaded clothing,

(continued on page 3)

A Changing of the Guard

Board Member Carla Niesen Steps Down

Faithful volunteers are the backbone of OGT and Carla Niesen has been, and continues to be, an incredibly active participant and encourager of us all. Recently, family needs require more of her attention so she has stepped down from her Board position as Communications Manager but remains committed and involved whenever our doors are open. The photo shows her helping pack the truck sending supplies to Latvia October 29. On any given day you might find her sorting, packing or allocating the many different supplies to their appropriate boxes



or destinations. Her's is the happy voice greeting any new groups or visitors, making sure all feel welcomed and celebrated. She has been the motivating force to increase and improve our communications network, keeping supporters well informed of our Branch needs and activities.

Mary Lou McKee has agreed to accept the offered position on the Board as the new Communications Manager (mckeedml@comcast.net). She is an active member of Christian Life Center, serving as a deacon there. As a resident of Jenner's Pond Retirement Community she has connected them to OGT MAB resulting in some additional volunteers and lots of ongoing donations. Welcome Mary Lou. ■



Mid-Atlantic Branch

Fun in Fundraising

*There is joy
in serving.*

"I will bless those who bless you ..." Genesis 12:3a

October 29 launched us on **our Fall fund raising journey** as the ladies prepared the mailing in record time. **The exceptional Fall Grant Match this year is \$25,250!** We have received \$18,150 of matching donations.



Leanne Corba, as Financial Secretary & BOD Secretary, is thrilled to be busy writing thank you notes and acknowledgements for the monetary donations that have been sent! She is a firm believer in getting those replies out quickly not only for tax considerations but to let YOU, our supporters know that **we are incredibly grateful for the contributions you are making to Orphan Grain Train MAB.** The prayers, donations of items we can send, and the monetary gifts are integral to our Christian mission.

Even though our fund drive has concluded, know that **Your financial donations are always welcome!** It is so easy; just go to ogt.org/branches/mid-atlantic and choose donate. If you prefer, you can mail in donations to Mid-Atlantic Branch Office, 89 Line Rd, Malvern, PA 19355. ■

God Supplies:

This Fall we were low in warehouse donations, but God's timely supply arrived through truckloads from Santa Maria and from a new contact, Christian Life Center in New London.

'Matching' Miracles

Supporters give generously.

Our 10th Anniversary **FRIENDS HELPING FRIENDS** was again a successful fund raiser for OGT MAB. A total of \$2789 + a \$2,000 match **raised \$4,789.** Thank you very much to the volunteers who "sold" shopping passes and sat in 5 various Boscov's stores in the area to "sell" more passes and share information about Orphan Grain Train. For those who are not familiar with this event, it is an **annual activity held by Boscov's** Department stores each fall to support non-profit organizations. For a **\$5.00 donation** to the organization, the donor receives a shopping pass for the day of the event where they receive 25% off the price of most items in the store or online. This pass can be used in any Boscov's store. Next year with more volunteers, we can expand our reach into more Boscov stores. To help, contact Sandy O'Hedy s.ohedy116@comcast.net. ■ - Sandy O'Hedy

Nourishing Times Together

Macungie group of 11 join in the packing on Nov. 15



Bearing gifts from afar, **11 women from Concordia Lutheran Church, LWML, in Macungie** joined their energies with ours to pack 137 Hygiene Kits, help sort and pack donations and deliver to us many bags of donations including some special quilts. One was made from squares made by a grandmother 26 years ago, and fashioned into the beautiful quilt made and donated by her grand-daughter. Included also were gorgeous crocheted hats, lined with fleece, which are sure to keep the users warm. ■



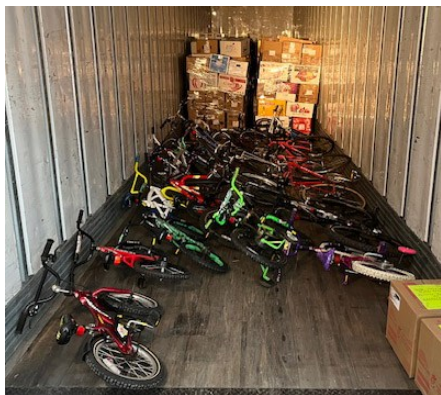
A Banner Year: 5 Shipments , cont.

(continued from page 1)

bedding & linens, household goods, fabric & sewing supplies, hygiene items, medical equipment, school & sports items, bikes, children's toys and Bibles. The second shipment to **Latvia** contained 1164 boxes and pieces. **Some of that inventory** included 227 boxes of women's items, 195 boxes of men's items, 107 boxes of children's clothes, 48 boxes of toys, 78 boxes of bedding, 124 boxes of household items, 14 hygiene boxes, 152 pieces of medical equipment, 20 bicycles, 2 sewing machines with fabric & sewing supplies, 6 boxes of sports equipment. That's an impressive list that is sure to make a difference in many lives. Total boxes & pieces: 1164. **It is expected to arrive December 15!** The **Republic of Georgia** shipment was equally impressive, totaling 1296 boxes and pieces: 931 boxes of clothes, 141 boxes of bedding and linens, 130 boxes of food (28,080 meals), 44 boxes hygiene items, 35 boxes of toys and bikes, 10 boxes of school and sports equipment & 5 pieces medical. Who knows how many of the items you donated are in these shipments! ■

National: Joint Shipment to KY

On November 11, Mid-Atlantic and Maryland branches joined forces to help Appalachian families living in poverty. At our West Grove warehouse, twelve pallets of clothing and 49 walkers were loaded onto a 53-foot trailer for delivery to Millersville, MD; once there, additional donations filled the truck destined for Christian Appalachian Project (CAP) in Paintsville, KY. Among our pallets were 250 boxes of women's winter clothes plus 171 boxes of extra-large clothing for both sexes. We pray these items will benefit their recipients as the region expects below-normal temperatures this winter. Additionally 21 refurbished bicycles were sent for future international shipments. ■



High Energy

Avon Grove doubles their help.

MAB welcomed 14 members of the **Avon Grove High School Basketball team and 3 of their coaches** on October 18. These strapping young men moved pallets and boxes, making it look easy, and then worked alongside our regulars, packing and sorting donations. We're thrilled when these teams make OGT a part of their volunteer schedule.



The second Avon Grove team is the **Avon Grove Charter School Leo Club**, led by Bethanne Lindendbaum. On December 3, she dropped off 1,000 stuffed toys collected by the group, an increase of over 200 from last year. ■

Finger Power

Many hands make light work.

Thanks to the multiple groups and individuals who **crocheted cotton washcloths** to be shared in Feminine Hygiene Kits for **Liberia and South Sudan**. Carla Niesen did a marvelous job getting volunteers to crochet! The target is 2,000 and **we sent 371**. They traveled to the Maryland Branch to be added to their supply and then sent. It is hard to imagine the impact one kit can have on the lives of the young women receiving them. You make a difference! ■





Relief for Human Need Worldwide



Mid-Atlantic Branch Office
89 Line Road
Malvern, PA 19355
610-644-4508
Email: mid-atlantic@ogt.org
Website: www.ogt.org

Warehouse:
8 Federal Road
West Grove, PA 19390

Hours of Operation:
Wednesday, 10:00—2:30
Saturday, 9:00—1:30

Warehouse Manager
Rob Hall
rob.hall.OGT@gmail.com
484-459-9217

Our Mission Statement

In loving response to Christ the Servant, the Orphan Grain Train movement encourages and enables God's people to share personal and material resources in bringing Christ's name and character to needy people, both far and near.

Mid-Atlantic Branch Purpose

To build a Christ-centered team who can use their God-given talents to be a blessing to others through their service in the Mid-Atlantic Branch of Orphan Grain Train, fulfilling the Mission Statement of the OGT movement.

Genesis 12:3 - "I will bless those who bless you ... and in you all the families of the earth shall be blessed."

"I will not leave you as orphans, I will come to you." John 14:18

did YOU KNOW?

Photos on page 1: jump ropes donated to Urban Promise, a Christ based organization equipping children and young adults in Wilmington, DE and two photos revealing the challenge of loading supplies into the container headed for Latvia.

Donations Needed

- ◆ **Men, Women's and Children's Clothes** (any season), shoes, scarves, gloves, belts, pocketbooks
- ◆ Cloth or disposable **diapers** for adults or children
- ◆ **Hygiene:** Combs, toothbrushes, bar soap, sanitary products
- ◆ **Bed and Bath linens:** sheets, quilts, comforters, blankets, towels, wash cloths
- ◆ Soft and hard **toys** (NONE with batteries)
- ◆ **School supplies:** backpacks, NEW coloring books, crayons, ballpoint pens and pencils; writing paper and notebooks
- ◆ **Medical items:** orthopedic boots or shoes, canes, crutches, commodes, shower chairs, wheelchairs
- ◆ **Bicycles**

PLEASE:

- ◆ NO heavily damaged and stained clothes
- ◆ NO items with batteries, NO electronics
- ◆ NO used underwear, NO swim suits

what's AHEAD...

Divine Direction is Charting MAB's Course – the Lord led us to our Jennersville warehouse and now we need His continued leading as we face the need to leave our current space by September, 2026. **Please join us in prayer** for His wisdom, provision and guidance .

We need a minimum of 6,000 sq ft if renting, 10,000 sq ft if buying, with preference of location being southeastern Chester County, or possibly another safe neighborhood near the PA-DE state line. It is not necessary to be on a main road. Essential are: rest rooms, a heated facility, a loading dock suitable for 53' semi-trailers, and parking for at least 12 vehicles.

If you have any leads or know of any warehouses that might be available, contact Rob Hall
rob.hall.OGT@gmail.com or (484) 459-9217.

Our Strategic Planning Committee, led by Bob Larson, will be busy developing long-term objectives for our branch, planning for our future as we face this change. ■

To God alone be the Glory!