

Orphan Grain Train is a Christian volunteer network that shares personal and material resources with needy people in America and around the world. Grain Train volunteers gather donations of clothing, medical supplies, food, Christian literature, and other aid to meet real needs. The Orphan Grain Train movement is a loving response to Jesus Christ's example as a servant and His love for us. Orphan Grain Train is a non-profit organization, created in 1992, to provide assistance to those in need and in natural disasters in both the United States and foreign countries.



Orphan Grain Train Highland Lakes of Texas

Happenings

March 2018



Auction item generates more cash for shoes

One of the items donated to the Valentine Shoes Fundraiser was an "Afternoon Concert" by Matthew Butter. The concert purchased by Gloria and Jerry Thompson was repurchased by Gary and Nanna Wieck and Pat Mueller and Susan Patten of Valentine Lakeside Resort. This money was added to the fundraiser total, as were the donations received at the concert, adding more than \$200 to the money available to purchase shoes.



Combine sunshine, fellowship, wine and cheese with an afternoon cruise, equals FUN TIME and shoes for OGT

Ray and Kathy Raddatz, Karen and Byron Hobbs, successful bidders of another of the fundraiser's auction items, joined Captain Gary and Nanna Wieck for a their "Wine and Cheese Cruise" this week.

ATTENTION THRIVENT MEMBERS - IT'S THAT TIME

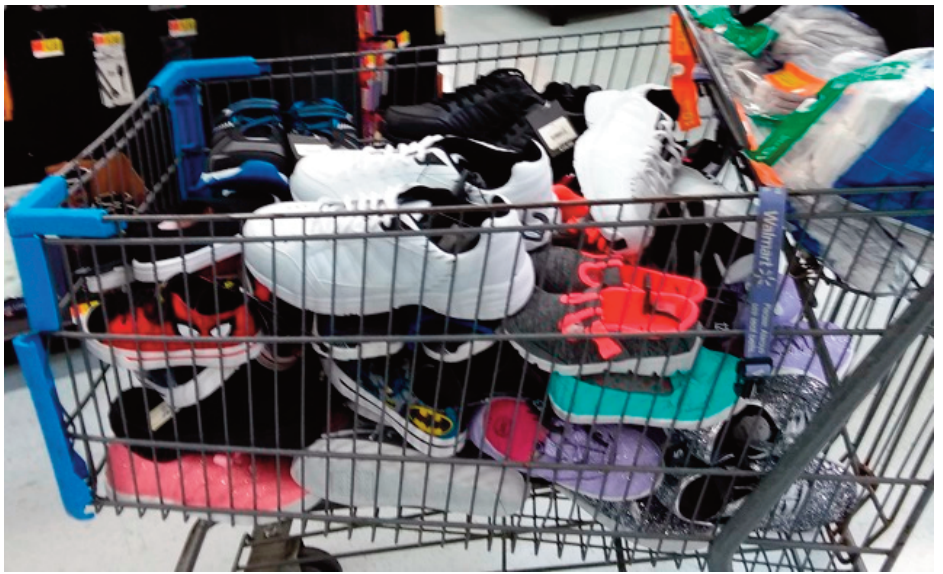
Please direct your Thrivent Choice Dollars to Orphan Grain Train before they expire on March 31. As Thrivent offices will be closed on Friday, March 30 and Saturday, March 31, because it is Easter weekend, plan to call early in the week of the 25th to avoid busy phone lines at the last minute. Call 1-800 847-4836 and say "choice dollars" at automation. You can also go to www.thriventchoice.com to make your designation.

Members must be at least 16 years old and have Thrivent products with annual premiums of \$750 or more per year, Thrivent investments or retirement products with a value of at least \$20,000 to earn Choice Dollars.

YOU MUST RENEW THE DISTRIBUTION OF YOUR CHOICE DOLLARS EVERY YEAR. YOUR CHOICE OF A PRIOR YEAR DOES NOT CARRY OVER.

DO NOT LET YOUR DOLLARS BE LOST BECAUSE YOU DID NOT TAKE THE OPPORTUNITY TO CHOOSE.

Shoes, shoes, and more shoes



Multiple shopping carts of shoes garnered more than a few looks of wonder as OGT-HLTX volunteers raided sale racks at Walmart this past week.

They spent \$753 dollars to purchase 114 pairs of shoes and some bargain socks. With the sale, the average cost per pair of shoes was just over \$6.

Additional shoes will be purchased when these 114 pairs are packed and ready for shipment.

and socks



Orphan Grain Train operates with Volunteers not because they are worth less, but rather because they are priceless.

Flood donations overflow

Flooding in southern Texas this past year, brought a generous outpouring of donations from around the Hill County area. Many more clothing items were donated than could be used by flood victims. Some of these donations have found their way to OGT-HLTX and are now being packed for shipping to south Texas Missions. Thanks to the Kingsland Fire Department who used their station as a collection site and to those who thought of OGT-HLTX when extras had been collected.

To quickly get these contributions on their way to those in need, we need more helping hands. Please consider donating a morning to help out. Come and help on Tuesday mornings 9 to noon or give Myrna Choitz 830-798-0610 or Betty Dove 281-744-4376, a call and see when extra packing days might be scheduled.

Orphan Grain Train aids Florida, Texas, Puerto Rico Hurricane Victims

Hurricanes in 2017 sweep over Florida, Texas, and Puerto Rico damaging and destroying homes and peoples lives. Orphan Grain Train was quick to respond with Hurricane Relief. A few things you might like to know about the organization's efforts were included in Norfolk OGT's latest quarterly newsletter.

A second disaster relief responder, OGT's relief efforts began in September, just weeks after August 25 Hurricane Harvey hit AND they are still on-going.

OGT has now shipped semi loads of tools, generators, water pumps, wheelbarrows, etc. to Florida, and Texas.

They have shipped eleven semi-loads of sheet-rock, three loads of insulation, a load of shingles and two loads of mattresses to Houston. As most of the food pantries in Houston were flooded, OGT sent four semi-loads of food and water to assist to remaining food shelves and food pantry services.

So far OGT has spent over \$250,000 to assist in Harvey relief efforts.

Additionally, they have sent up a Volunteer Village to help and encourage volunteers to head to Texas to assist homeowners in clean up and rebuilding.

Orphan Grain Train has been and is there to assist the residents of Puerto Rico recover from Hurricane Maria, also.

OGT has shipped five containers filled with relief supplies, food and water. Most all has now been cleared, unloaded and distributed to hurting and hungry families .

In February, OGT was able to ship the fifth container which contained six generators, which will supply electricity to families who had been without since September 20, when Maria struck.

Here, too, efforts to assist will continue with. More shipments are already planned.

If you would like to assist go to www.ogt.org and click on the donate button. It is easy... Or you can send Hurricane Relief Fund donations to Orphan Grain Train, P.O. Box 1466 Norfolk NE 68702-9915

If you would like to sign up to receive weekly updates on Norfolk activities or the quarterly newsletter go to OGT.org, click on Newsroom and then sign up.

Orphan Grain Train is a Christian volunteer network that shares personal and material resources with needy people in America and around the world. Grain Train volunteers gather donations of clothing, medical supplies, food, Christian literature, and other aid to meet real needs. The Orphan Grain Train movement is a loving response to Jesus Christ's example as a servant and His love for us. Orphan Grain Train is a non-profit organization, created in 1992, to provide assistance to those in need and in natural disasters in both the United States and foreign countries.



Relief for Human Need Worldwide

Orphan Grain Train Highland Lakes of Texas

Donation Center is located at

15946 Hwy 29 in Buchanan Dam

The Highland Lakes of Texas Orphan Grain Train container is open to accept donations of serviceable, gentle used clothing (clean without tears or holes) and medical aids such as walkers, wheel chairs, canes and crutches

Tuesday and Thursday mornings 9 a.m. to noon.

New school supplies, children's shoes, socks, and underwear would also be appreciated. To arrange pickup or alternative drop-off time call Betty Dove at 281-744-4376 or leave a message for a return call at Genesis Lutheran Church 512-793-6800 or at OGT-HLTX@Outlook.com. Monetary donations can be sent to OGT-HLTX at P.O. Box 937 Buchanan Dam, Texas 78509. Donations are tax deductible.

**OGT container
located at**

15946 Hwy 29

**11.5 miles west of Burnet
or 1 mile east of 1431
on south side of State Hwy 29**

